

## H2-B-W4



### **SUPER-RAIL**

#### **Eco Driven System**

The H2-B-W4 safety barrier is used on high speed roads providing protection for both large and small vehicles. A very economical system with 37 kg per metre.

All steel sections are galvanised providing long term maintenance free protection from corrosion.

H2-B-W4

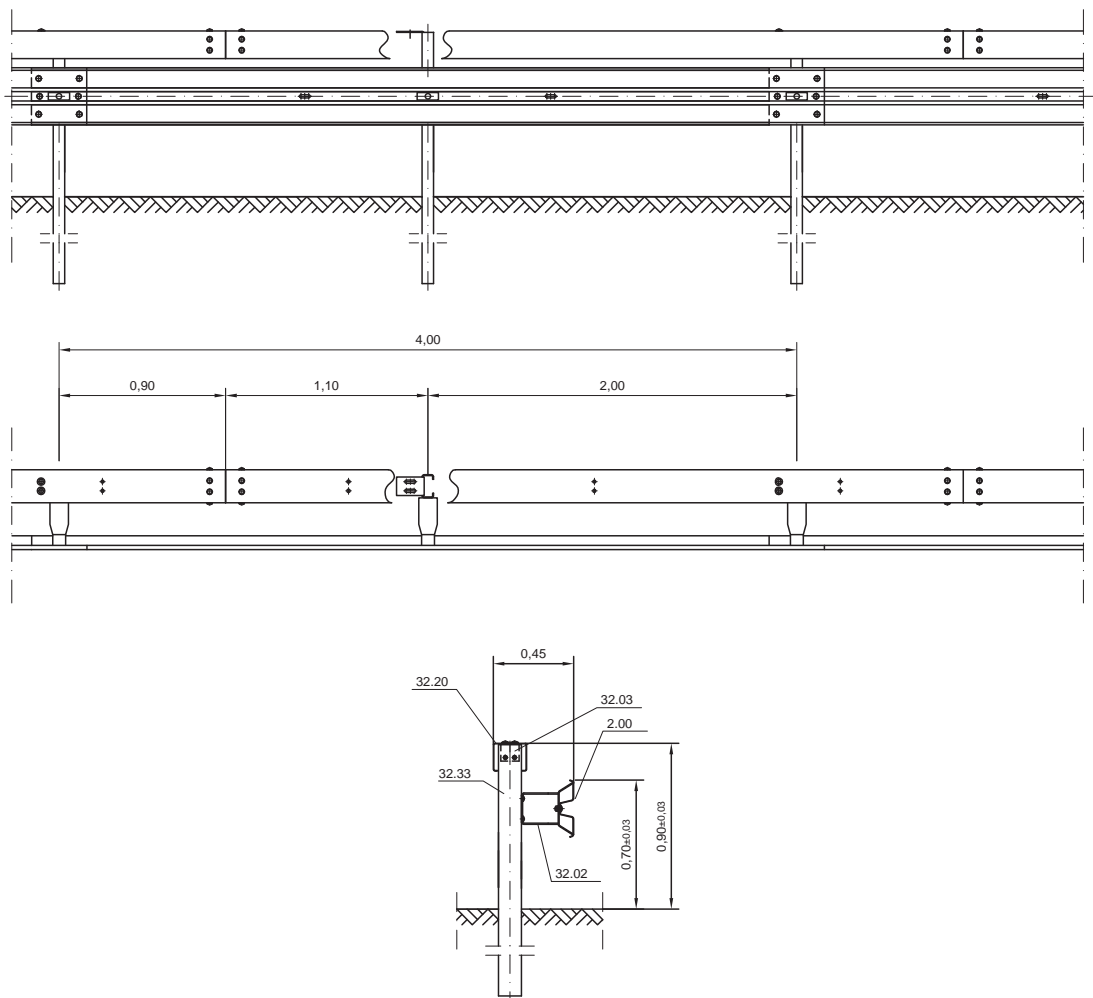
Safety Barrier



Technical Data: SUPER-RAIL Eco

H2-B-W4

Test Standard Acceptance Test Testing Institute	DIN EN 1317 Part 1 and Part 2 TB 11 and TB 51 TSR Engineering GmbH
Containment Impact Severity Level Working Width	H2 B W4
Test Length System Height System Weight	52 m 0,90 m 37.5 kg/m Profile B



**JPK**  
Est. 1975  
**Fencing Systems**

website : [www.jpk.ie](http://www.jpk.ie)  
email : [info@jpk.ie](mailto:info@jpk.ie)  
telephone : +353 91 798 146



EN1317  
APPROVED

**PASS+CO**  
BARRIER SYSTEMS GmbH